

# Kracht van Utrecht Het duurzame alternatief



New infra  
Adapt infra  
Better infra usage  
PT & bicycle  
Manage mobility  
Pricing  
Planning

National, regional (province), local Utrecht, U NED, U<sub>12</sub>

### Solutions per modality:

- Bicycle
- Public transport
- Car
- New: combine PT & bicycle

USP, this location



# Limited space

At Utrecht Science  
Parc



Near USP



# Construction



Build new, RIVM



big, P Máxima Center pediatric oncology



Small



Building empty spaces. What?

# Bouwen, invulling van de ruimte



- Buildings?
- Student rooms. How many, how high?
- Parking facilities?
- Green
- Routes (walk, cycle, drive, PT)
- Other



# Public Transport



# Cycle

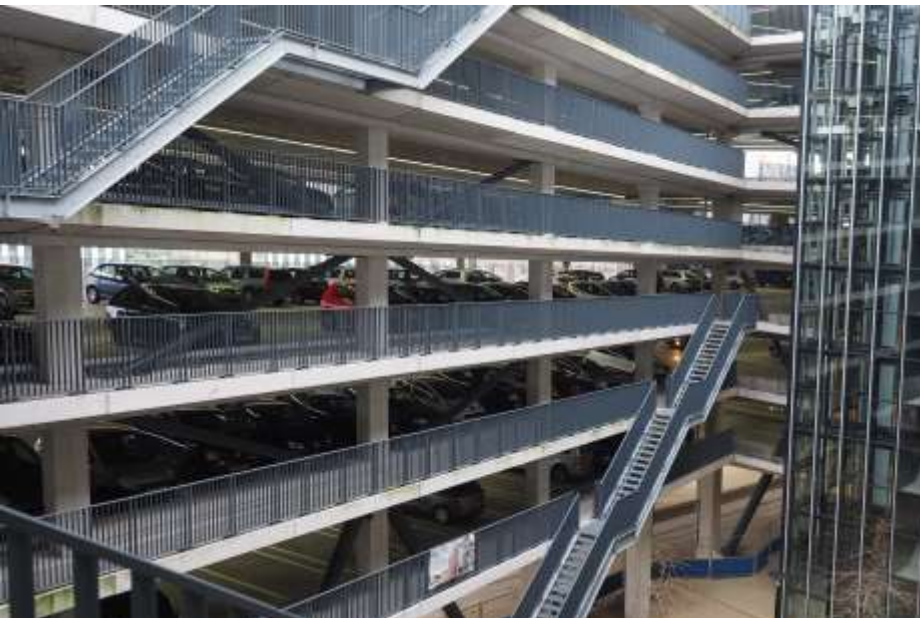




# Bicycle parking



# Car parking



# Crossings



# Solution: which modality:

- Bicycle  $x_1 - x_2$  %
- PT  $y_1 - y_2$  %
- Car  $z_1 - z_2$  %

$x_1$   $y_1$   $z_1$ , lower limits  
 $x_2$   $y_2$   $z_2$ , upper limits

What is mathematically the best???

## Solution: parameters and preconditions, examples

- Limited space
- Travel and parking costs
- Climate
- Road safety
- Travel time.....

Preconditions, examples

Traffic flow, quality of the travel time, healthy.....

What will be your  
solution for a better  
and healthier USP,  
your location?

It will go better from  
February 16<sup>th</sup>, 2018!

Good luck!

